



FarmChem

Serving the agricultural industry since 1974.

2011 Compliance Catalog



www.farmchem.com

800-247-1854



The following has been prepared to provide and show solutions for the new refillable container and re-packaging requirements. The following is not intended to be an interpretation of the rules. To view the specific rules, please visit the following websites for further details:

- <http://www.epa.gov/pesticides/regulating/containers.htm>
- <http://www.maca.org/wp-content/uploads/2010/11/FINAL-PCC-Refillable-Container-Rules-8.09.pdf>
- <http://www.maca.org/education/mini-bulk-containers/>
- <http://pesticidestewardship.org/container/Pages/Video.aspx>
- <http://www.aginspect.org/USEPA.html>

Container Type Examples: Asset or long term reusable containers that are "top unload"



Tamper Evident Devices



Tamper evident push seal with serial number
 PS-RED - \$0.43



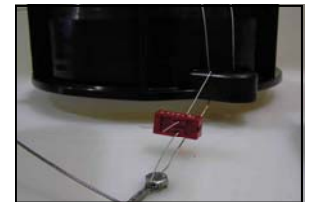
0.014 OD x 1,000' roll of four strand stainless steel wire
 PS-1000SS - \$76.70 per roll (sold in rolls only)



Tamper evident cable and seal with serial number
 1/16" OD x 12" length cable with seal - EZLOCSEAL- \$1.31
 1/16" OD x 16" length cable with seal - EZLOCSEAL16 - \$2.05
Recommended for use with 2" couplers



Tamper evident 12" plastic seal with serial number
 SECUR-PULBAG - \$106.90 (quantity 500/bag)



One-way Valve Options for Top Mounted Pumps



1" Male NPT x 1" Female NPT Check Valve
 CV100MT - \$8.86

Retro Kit For Existing Non-Compliant Pumps
 CV100MT-KIT - \$12.70

Vent Options



Auto Vacuum Vent
 347854 - \$12.30



2" Buttress Plug with Vent
 CBE-VENT - \$4.21

2" NPT Plug with Vent
 CNE-VENT - \$4.21

Pressure Test Kit



Automatic pressure test kit. Used to pressurize mini bulk tanks to look for leaks. Simply supply air pressure to the assembly, and the kit automatically sets the tank pressure.

MINIBULKTESTER - \$135.14



Container Type Examples: Asset or long term reusable containers that are "top unload" and/or "bottom unload".



Tamper Evident Devices



Tamper evident push seal with serial number
 PS-RED - \$0.43

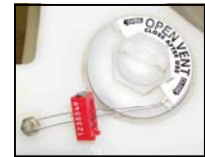
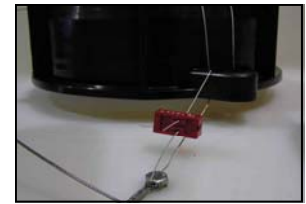


0.014 OD x 1,000' roll of four strand stainless steel wire
 PS-1000SS - \$76.70 per roll (sold in rolls only)



Tamper evident cable and seal with serial number
 1/16" OD x 12" length cable with seal - EZLOCSEAL- \$1.31
 1/16" OD x 16" length cable with seal - EZLOCSEAL16 - \$2.05
Recommended for use with 2" couplers

Tamper evident 12" plastic seal with serial number
 SECUR-PULBAG - \$106.90 (quantity 500/bag)



One-way Valve Options for Top Mounted Pumps



1" Male NPT x 1" Female NPT Check Valve
 CV100MT - \$8.86

Retro Kit For Existing Non-Compliant Pumps
 CV100MT-KIT - \$12.70

Vent Options



Auto Vacuum Vent
 347854 - \$12.30



2" Buttress Plug with Vent
 CBE-VENT - \$4.21



2" NPT Plug with Vent
 CNE-VENT - \$4.21



2" NPT Stainless Steel Pressure Relief Vent
 GS10005 - \$98.24

Bottom One-way Valve Options



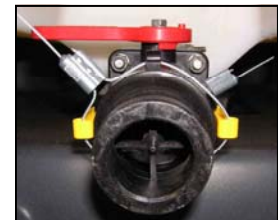
2" Male Adapter x 2" Female Adapter (add-on coupler)
 BC200A200B - \$27.42 - **Caution!** *The add-on coupler should not be used if it extends past the tank profile.*
 Best used with the Snyder Square Stackable™ containers, Bonar Mark V™ containers, Pro-Kube™ containers



2" Male NPT x 2" Male Adapter (complete replacement one-way valve, includes internal one-way valve)
 VSFMTBC200 - \$32.75



2" Male NPT x 3.5" Male NPT SS Check Valve - for stainless steel IBC containers
 2RV-SSTCHK-32M32M - \$121.78



Pressure Test Kit



Automatic pressure test kit. Used to pressurize mini bulk tanks to look for leaks. Simply supply air pressure to the assembly, and the kit automatically sets the tank pressure.

MINIBULKTESTER - \$135.14



Container Type Example: Cage and bottle type reusable containers.



Tamper Evident Devices



Tamper evident push seal with serial number
PS-RED - \$0.43



0.014 OD x 1,000' roll of four strand stainless steel wire
PS-1000SS - \$76.70 per roll (sold in rolls only)



Tamper evident cable and seal with serial number
1/16" OD x 12" length cable with seal - EZLOCSEAL- \$1.31
1/16" OD x 16" length cable with seal - EZLOCSEAL16 - \$2.05
Recommended for use with 2" couplers

Tamper evident 12" plastic seal with serial number
SECUR-PULBAG - \$106.90 (quantity 500/bag)



Vent Cap with 2" Opening



6" Container Cap with 2" Female NPT Vent
TL652S - \$7.80 (vent Cap with 2" vent, fits Schutz & IBC NA containers)



2" Female NPT Vent
TL6531 - \$2.49 (2" Plug with vent)

Add-on Coupler - Includes 2011 One-way Compliant Valve



2" NPS x Camlock with one-way compliant valve
Call for part number - \$12.51 **Caution!** *The add-on coupler should not be used if it extends past the container profile.*
Call 800-247-1854 with your container manufacture and bottle type for correct part number to match your container.

One-way Valve Options (i.e. re-valving existing containers)



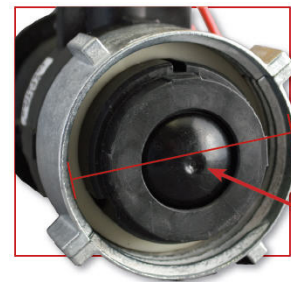
2" QD outlet, collar gasket, foil seal, tamper-evident handle seal & cap
WSFBC210 - \$28.05 (for Schutz & IBC NA/Clawson containers, 2 3/16" or 70 mm collar)



WFC230254 - \$29.04 (for Mamor/Mauser containers, 2 3/4" or 56mm collar)



Dust Cap for Banjo Bottom Valves
201FPT - \$ 2.13 (2" female NPT cap)



Note: I.D. of collar threads

Internal Check Valve

Rebottling with one-way valve installed



Replacement Bottle with one-way valve pre-installed
3035299 - \$105.15 (truck load price, bottle with one-way valve for Schutz containers) 90/truck load
BT275N20B107 - \$116.50 (truck load price, bottle with one-way valve for Mamor/Mauser containers) 90/truck load
2BN06IV30NNO - \$104.00 (truck load price, bottle with one-way valve for IBCNA/Clawson containers) 90/truck load
IBK228 - \$116.50 (truck load price, SL7 bottle with one-way valve for Greif containers) 90/truck load
IBK227 - \$99.10 - (truck load price, SL5 bottle with one-way valve for Greif containers) 90/truck load
Call for truck load prices



Pressure Test Kit



Automatic pressure test kit. Used to pressurize mini bulk tanks to look for leaks. Simply supply air pressure to the assembly, and the kit automatically sets the tank pressure.

MINIBULKTESTER - \$135.14



Container Type Examples: Reusable drum containers.



Tamper Evident Devices



Tamper evident push seal with serial number
PS-RED - \$0.43



0.014 OD x 1,000' roll of four strand stainless steel wire
PS-1000SS - \$76.70 per roll (sold in rolls only)



Tamper evident cable and seal with serial number
1/16" OD x 12" length cable with seal - EZLOCSEAL- \$1.31
1/16" OD x 16" length cable with seal - EZLOCSEAL16 - \$2.05
Recommended for use with 2" couplers

Tamper evident 12" plastic seal with serial number
SECUR-PULBAG - \$106.90 (quantity 500/bag)



One-Way Valve Options for Refillable Drums



2" Buttress Male with 1" Female NPT Plug
(for gravity dispense with spigot)
A-CHB-1 - \$7.46 (one-way valve)



1" NPT Male Spigot
SP-1 - \$3.21 (1" NPT Spigot)



2" Buttress Male x 2" NPT Female
(for gravity dispense with spigot or pump)
B-CHB-2 - \$5.57 (one-way valve)



2" NPT Male Spigot
FAUCET2 - \$16.83 (2" NPT Spigot)



2" Buttress Plug with Vent
CBE-VENT - \$4.21

2" NPT Plug with Vent
CNE-VENT - \$4.21



2" Buttress Male x 2" Female NPT Plug
(for pump dispense)
B-CHBD-2 - \$17.35 (one-way valve)



2" Buttress Male MicroValve
(for pump dispense)
MV-V-DT - \$25.48 (one-way valve)



Micro Matic Container Valve - 3-Pin
743-087 - \$37.00 (2" buttress Male thread, Viton seal)
743-086 - \$34.00 (2" buttress Male thread, EPDM seal)
743-008 - \$35.00 (2" Male NPT, Viton seal)
743-007 - \$37.00 (2" Male NPT, EPDM seal)
743-203/1000 - \$4.00 (dip tube for container valve)

Recirculation Kit



For containers with bottom discharge pumps that require recirculation. Use the discharge hose to run product back to the top of tank. At the container cap, the kit includes a tamper-evident valve (micro matic fill head coupler & container valve or similar). This allows the container cap to remain sealed with the tamper-evident seal in place while allowing recirculation.

RECIBC - \$269.00 (includes micro matic fill head, container valve (fits buttress threads), and Camlok couplers for quick disconnect from meter and fill head)

Multi Container Pump System



For multiple containers with top discharge pumps mounted to the gem caps by a micro matic or similar one-way valve. This pump can be changed to multiple tanks with the same type micro matic or similar one-way valves.

PH6-V-744 - \$355.00 (kit with PH6 pump, discharge hose, and dispense coupler)
743-087 - \$37.00 (container valve with buttress threads)
743-203/1000 - \$3.63 (dip tube for container valve)



FarmChem

**PO Box 309
Floyd, Iowa 50435**

**Toll Free: 800-247-1854
Fax: 641-398-2449**

www.farmchem.com